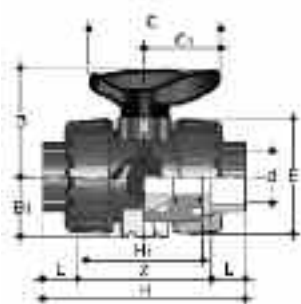


Valves

Premium Quality
Valve for Demanding
Environments

VKD Double union ball valves Manual – EPDM seals



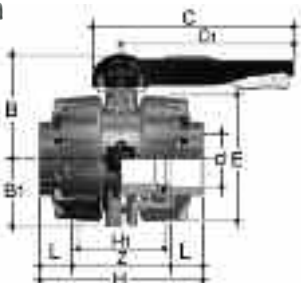
d	DN	PN	L	Z	H	E	B	C	Weight gms	Code
16	10	16	14	75	103	55	49	66	200	HO DKA 305
20	15	16	16	71	103	55	49	66	195	HO DKA 306
25	20	16	19	77	115	66	59	75	310	HO DKA 307
32	25	16	22	84	128	75	66	85	440	HO DKA 308
40	32	16	26	94	146	87	75	97	645	HO DKA 309
50	40	16	31	102	164	100	87	110	880	HO DKA 310
63	50	16	38	123	199	122	101	134	1490	HO DKA 311

Options:

FPM seals (plain ends) order HO DKB ***

For threaded versions refer to Imperial Valves section.

Manual valves can be supplied with locking kits - further information is available from our Valve Department.



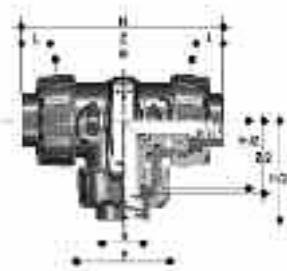
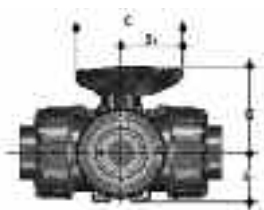
d	DN	PN	Z	L	H	H ₁	E	B	B ₁	C	C ₁	gms	Code
75	65	16	147	44	235	133	164	164	87	225	175	4380	HO DKA 312
90	80	16	168	51	270	149	203	177	105	327	272	7200	HO DKA 313
110	100	16	186	61	308	167	238	195	129	385	330	11141	HO DKA 314

Options:

FPM seals (plain ends) order HO DKB***

Premium Quality
Valve for Demanding
Environments

TKD 3-way ball valves Manual – EPDM seals



T port configuration

d	DN	PN	H	Z	C	C ₁	B	B ₁	gms	Code
20	15	16	118	86	67	40	54	29	310	HO TTA 306
25	20	16	145	107	85	49	65	34.5	550	HO TTA 307
32	25	16	160	116	85	49	65.9	39	790	HO TTA 308
40	32	16	188.5	136.5	108	64	82.5	46	1275	HO TTA 309
50	40	16	219	157	108	64	89	52	1660	HO TTA 310
63	50	16	266.5	190.5	134	76	108	62	2800	HO TTA 311

Options:

FPM seals (plain ends) order HO TTB***

FPM seals (threaded ends) order HO TTB***

Manual valves can be supplied with locking kits - further information is available from our Valve Department.

L port configuration

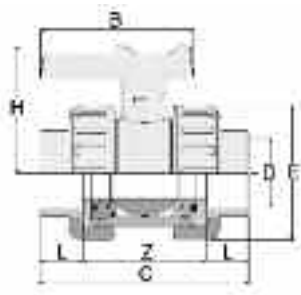
d	DN	PN	H	Z	C	C ₁	B	B ₁	gms	Code
20	15	16	118	86	67	40	54	29	310	HO LTA 306
25	20	16	145	107	85	49	65	34.5	550	HO LTA 307
32	25	16	160	116	85	49	65.9	39	790	HO LTA 308
40	32	16	188.5	136.5	108	64	82.5	46	1275	HO LTA 309
50	40	16	219	157	108	64	89	52	1660	HO LTA 310
63	50	16	266.5	190.5	134	76	108	62	2800	HO LTA 311

Options:

FPM seals (plain ends) order HO LTB***

VKD & TKD ball valves can be supplied electrically or pneumatically actuated.

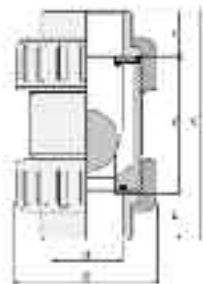
EV Double union ball valves Manual – EPDM seals



d	DN	PN	L	Z	C	E	H	B	Weight gms	Code
20	15	10	17	47	81	50	50	57	95	HO EVA 306
25	20	10	19	51	95	59	55	66	156	HO EVA 307
32	25	10	22	61	105	68	66.5	75	228	HO EVA 308
40	32	10	31	84	146	96	93	103	540	HO EVA 309
50	40	10	31	84	146	96	93	103	540	HO EVA 310
63	50	10	38	96	172	116	107	121	844	HO EVA 311

For threaded versions refer to Imperial Valves section.

UC Ball check valves EPDM seals



Size	L	Z	C	E	Weight gms	Code
20	17	48	82	50	96	HO UCA 306
25	19	55	93	59	99	HO UCA 307
32	22	62	106	68	145	HO UCA 308
40	26	75	127	80	234	HO UCA 309
50	31	84	146	96	357	HO UCA 310
63	38	99	175	116	937	HO UCA 311

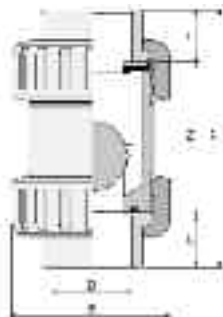
Options:

FPM seals (plain ends) order HO UCB***

For threaded versions refer to Imperial Valves section.

Note: this valve must be installed at a minimum distance of 10 x nominal diameter (eg. 20" for size 63mm) from pump flange.

UA Air release valves EPDM seals



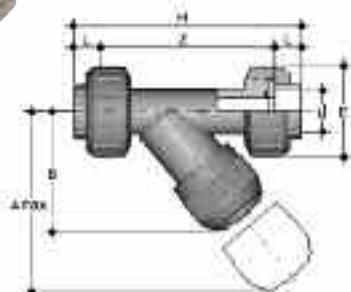
Size	L	Z	C	E	Weight gms	Code
20	17	48	82	50	96	HO UAA 306
25	19	55	93	59	99	HO UAA 307
32	22	62	106	68	145	HO UAA 308
40	26	75	127	80	234	HO UAA 309
50	31	84	146	96	357	HO UAA 310
63	38	99	175	116	937	HO UAA 311

Options:

FPM seals (plain ends) order HO UAB***

For threaded versions refer to Imperial Valves section.

RV Y-Type strainers Plain ends – EPDM seals



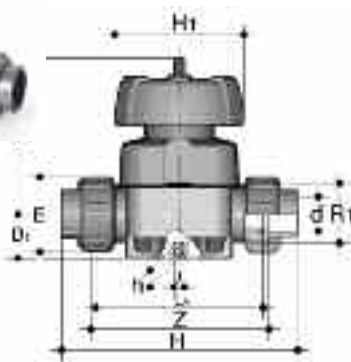
D	DN	PN	A	B	E	L	Z	H	Fig.	gms	Code
			Grey	max							
20	15	16	125	72	55	16	103	135	A	211	HO UVA 306
25	20	16	145	84	66	19	120	158	A	358	HO UVA 307
32	25	16	165	95	75	22	132	176	A	256	HO UVA 308
40	32	16	190	111	87	26	155	207	A	733	HO UVA 309
50	40	16	210	120	100	31	181	243	A	1095	HO UVA 310
63	50	10	240	139	120	38	222	298	A	1843	HO UVA 311

Options:

FPM seals (plain ends) order HO UVB ***

For threaded versions refer to Imperial Valves section.

VM Diaphragm valves Manual – plain union ends – EPDM seals



d	DN	PN	B	B ₁	H	h	H ₁	J	L	gms	Code
20	15	10	95	26	124	12	90	M6	16	700	HO UMA 306
25	20	10	95	26	144	12	90	M6	19	700	HO UMA 307
32	25	10	95	26	154	12	90	M6	23	700	HO UMA 308
40	32	10	126	40	174	18	115	M8	27	1500	HO UMA 309
50	40	10	126	40	194	18	115	M8	32	1500	HO UMA 310
63	50	10	148	40	224	18	140	M8	39	2400	HO UMA 311
* 75	65	10	225	55	284	23	215	M12	44	7000	HO VMA 412
* 90	80	10	225	55	300	23	215	M12	51	7000	HO VMA 413
* 110	100	10	295	69	350	23	250	M12	61	10500	HO VMA 414

Options:

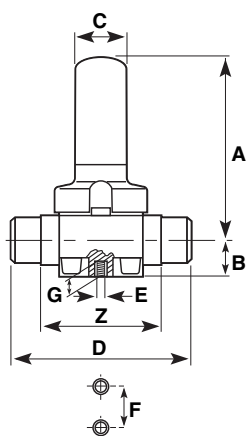
FPM diaphragm order HO VMB***

PTFE diaphragm order HO VMC***

Manual Valves can be supplied with locking kits - further information is available from our Valve Department.

*Note: 75mm, 90mm and 110mm are spigot ended.

PR Pressure relief valves EPDM seals

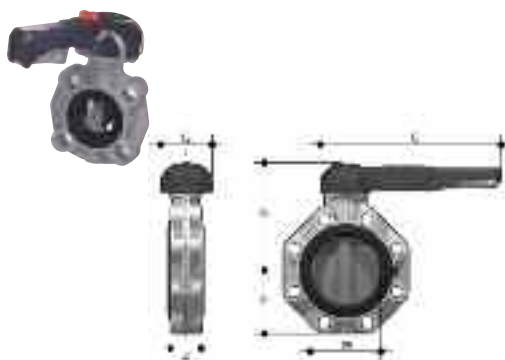


Size	PN	Z	A	B	C	D	E	F	G	gms	Code
20	10	92	143	20.5	35	124	M6	25	12	700	HO PRA 406
25	10	106	143	20.5	35	144	M6	25	12	700	HO PRA 407
32	10	108	143	25.0	35	154	M6	25	12	700	HO PRA 408
40	10	120	204	36.0	50	174	M8	44.5	16	1500	HO PRA 409
50	10	130	204	39.5	50	194	M8	44.5	16	1500	HO PRA 410
63	10	146	219	49.0	50	224	M8	44.5	16	2400	HO PRA 411

Options:

FPM seals order HO PRB***

FK Butterfly valves Glass reinforced polypropylene with ABS disc



lever operated

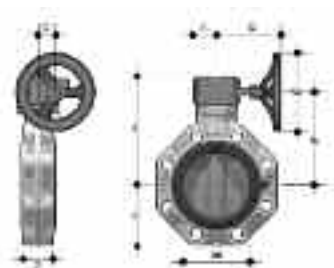
d	DN	PN	B ₂	B ₃	C	C ₁	gms	U	Z	Code
50	40	16	60	137	175	100	900	4	33	H0 FKA 106
63	50	16	70	143	175	100	1080	4	43	H0 FKA 107
75	65	10	80	164	272	110	1470	4	46	H0 FKA 108
90	80	10	93	178	272	110	1870	8	49	H0 FKA 109
110	100	10	107	192	272	110	2220	8	56	H0 FKA 110
140	125	10	120	212	330	110	3100	8	64	H0 FKA 111
160	150	10	134	225	330	110	3850	8	70	H0 FKA 112
225	200	10	161	272	420	122	6750	8	71	H0 FKA 113

Options:

FPM seals order H0 FKB***

U = No. of holes

with gear box



Size	DN	PN	B ₂	B ₅	B ₆	G	G ₁	G ₂	G ₃	gms	U	Z	Code
75	65	10	80	174	146	48	135	39	125	2400	4	46	HV FKA 108
90	80	10	93	188	160	48	135	39	125	2800	8	49	HV FKA 109
110	100	10	107	202	174	48	135	39	125	3150	8	56	HV FKA 110
140	125	10	120	222	194	48	144	39	200	4450	8	64	HV FKA 111
160	150	10	134	235	207	48	144	39	200	5200	8	70	HV FKA 112
225	200	10	161	287	256	65	204	60	200	9300	8	71	HV FKA 113
250	250	10	210	317	281	88	236	76	250	18600	12	114	HV FKA 114
315	300	8	245	374	338	88	236	76	250	25600	12	114	HV FKA 115

Options:

FPM seals order HV FKB***

U = No. of holes

Note: Lugged versions available to special order. Please refer to our Valve Department for further details.

Valves can be supplied as electrically or pneumatically actuated.
Contact our Valve department on 01543 272424 for further information.